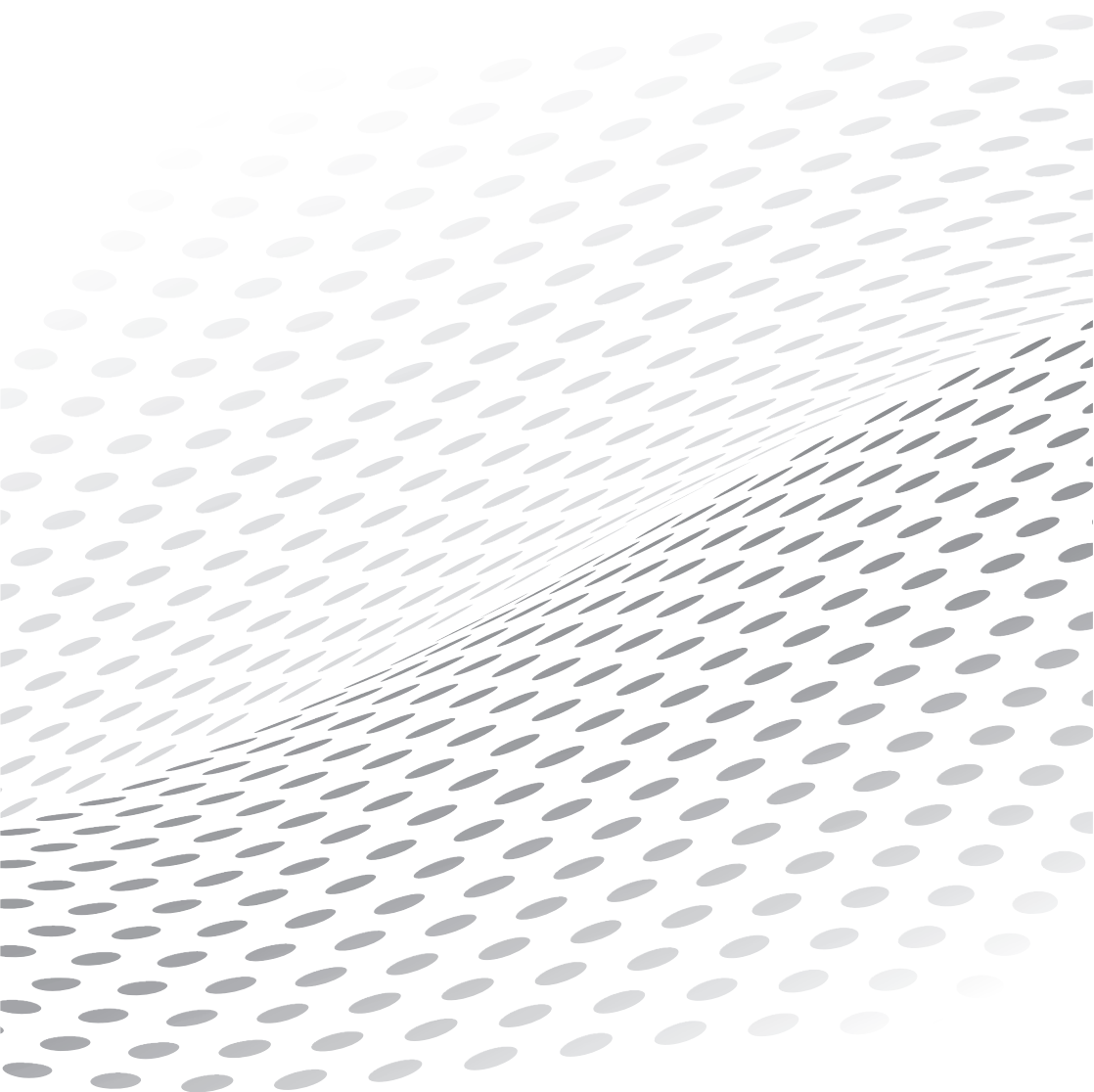




# Operation manual



# IMPORTANT SAFETY INSTRUCTIONS



The lightning with arrow symbols inside the equilateral triangle is designed to remind users that there is a non-insulating "dangerous voltage" inside the product casing, which may be strong enough to constitute a risk of electric shock.

## WARNING

1. To reduce the risk of electric shock, do not remove the cover (or back) as there are no user repairable components inside. Transfer the repair to qualified personnel.
2. The exclamation mark inside the equilateral triangle is intended to alert users of important operation and maintenance instructions in the literature accompanying the device.
3. Do not install this device in enclosed or building spaces such as bookcases or similar devices, and maintain good ventilation conditions in open spaces. The ventilation openings should not be impeded with items such as newspaper table-cloths, curtains etc.
4. Before installing or operating the device, refer to the information on the external bottom casing for electrical and safety information.
5. The AC inlet is used as the disconnect device, the disconnect device shall remain readily operable. the socket-outlet shall be easily accessible.
6. To reduce the risk of fire or electric shock, do not expose this device to rainy or damp environments. The device shall not drip or splash, and objects filled with liquid (such as vases) shall not be placed on the device.
7. Batteries (batteries or battery packs) should not be exposed to excessive heat such as sunlight or sparks.
8. Do not place the device in an unstable position. The device may fall, causing serious personal injury or death. Many injuries, especially to children, can be avoided by taking simple preventive measures, such as:
  - Use cabinets or brackets recommended by the device manufacturer.
  - Only use furniture that can safely support the device.
  - Do not place the device on tall furniture (such as cabinets or bookcases) without fixing the furniture and device on suitable brackets.
  - Do not place the device on the cloth or other materials between the device and the supporting furniture.
  - Educate children about the dangers of climbing onto furniture to come into contact with the device or its control devices. If your existing device is retained and located, the same precautions should be applied as mentioned above.
9. Do not place open flames, such as lighting candles, on the device.
10. Keep a minimum distance of 5cm around all edges of the device for sufficient ventilation.
11. By means of a power cord connected to a socket-outlet with earthing connection.

## Notes for battery disposal

The batteries used in this device contain chemicals that are harmful to the environment. To preserve our environment, dispose of used batteries according to local laws or regulations. Do not dispose of batteries with regular household waste. For more information, please contact the local authority or the retailer where you purchased the device. All trademarks are the property of their respective owners and all rights are acknowledged.



To prevent a prolonged fire, always keep candles or other open flames away from this device.



Correctly dispose of this device. This marking indicates that this device should not be disposed with other household wastes throughout the EU. To prevent possible harm to the environment or human health from uncontrolled waste disposal, recycle it responsibly to promote the sustainable reuse of material resources. To return your used device, please use the return and collection systems or contact the retailer where the device was purchased. They can take the device for environmentally safe recycling.

Operating temperature: 41°F (5 °C) to 104 °F (40 °C)

## 12. Hanging the device on the wall.

Warning: This operation requires two people.

To ensure a safe installation, observe the following safety notes:

- Check that the wall can support the weight of the device and wall mount assembly.
- Follow the mounting instructions provided.
- The device must be installed on a vertical wall.
- Make sure to use screws only suitable for material of the wall.
- Make sure that the cables are placed so that there is not any danger of tripping over them. All other safety instructions about our device are also applicable here.

※ Note: Illustrations in this publication are provided for reference only.

### WARNING:

- replacement of a battery with an incorrect type may defeat a safeguard;
- disposal of a battery into fire or a hot oven, or mechanically crushing or cutting of a battery, may result in an explosion;
- leaving a battery in an extremely high temperature surrounding environment, such as sunshine, fire, or hot surface may result in an explosion or the leakage of flammable liquid or gas;
- a battery subjected to extremely low air pressure may result in an explosion or the leakage of flammable liquid or gas.

### CAUTION

Risk of fire or explosion if the battery is replaced by an incorrect type!

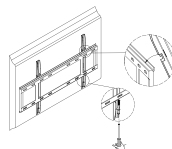
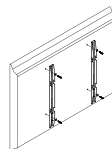
## Hanging the device on the Wall

Warning: This operation requires two people.

To ensure a safe installation, observe the following safety notes:

- Check that the wall can support the weight of the device and wall mount assembly.
- Follow the mounting instructions provided with the wall mount.
- The device must be installed on a vertical wall.
- Make sure to use only screws suitable for the material of the wall.
- Make sure that the device cables are placed so that there is not danger of tripping over them.
- Wall hanging screws size: M8x20mm (4pcs)

All other safety instructions about our device are also applicable here.



# Table of Contents

---

## Chapter 1: Introduction

Precautions .....	4
Product .....	4
Power and Plug .....	4
Power Cord and Signal Cable .....	4
Use Environment .....	4
Cleaning .....	4

## Chapter 2: General Operation

Switching on .....	5
Switching off .....	5

## Chapter 3: Other Information

Troubleshooting .....	6
-----------------------	---

## Precautions

Read all of the instructions before operating the device.  
Keep these instructions well for future use.

## Product

- Do not block or cover the ventilation openings on the back cover.
- Do not push objects of any kind into the device through the cabinet slots as they could touch the current carrying parts or short-circuit parts, resulting in fire, electric shock, or damage to the device.
- Do not attempt to open the cabinet as this may cause damage. No parts inside you can service by yourself. Refer all servicing to qualified personnel.
- Do not scratch or mar the device screen.
- Do not impact the device screen with hard pressure as this may damage the device screen severely.

## Power and Plug

Unplug the device under the following conditions:

- If the device will not be used for a long period of time.
- If the power cord or the power outlet/plug is damaged.
- Follow the instructions to install and adjust the device. Adjust those controls that are covered in this operating instructions as improper adjustment of other controls may result in damage. If this happens, unplug the device and refer to the service personnel.
- If the device is subject to impact or has been dropped to have the cabinet damaged.

## Power Cord and Signal Cable

- Do not allow anything to rest on or roll over the power cord and the signal cable.
- Protect the power cord and the signal cable from being trampled.
- Do not overload the power cord or the power outlet.
- Do not expose the power cord and the signal cable to moisture.

## Use Environment

- Do not place the device on an unstable cart, stand, or table.
- Place the device on a place that allows good ventilation.
- Do not use the device near damp, and cold areas.
- Protect the device from overheating.
- Do not use the device near damp and cold areas.
- Protect the device from overheating.
- Keep the device away from direct sunlight.
- The device shall not be exposed to dripping or splashing and no objects filled with liquids, such as vases, shall be placed on the device.
- Do not use the device near excessively dusty locations.

## Cleaning

- Wipe the screen and the cabinet with a soft, clean cloth or some special liquid cleaner.
- Do not apply excessive force to the screen when cleaning.
- Do not use water or other chemical cleaner to clean the screen as this may damage the surface of the device.

### Switching on

- Insert two batteries into the remote control.

Precautions on using batteries:

Only use the battery types specified.

Make sure you use the correct polarity.

Do not mix new and used batteries.

Do not use rechargeable batteries.

Do not expose batteries to excessive heat such as sunshine, fire or the like throw them in a fire, recharge them or try to open them, as this could cause them to leak or explode.

Remove the batteries from the remote control if you are not using it for a long period of time.

- Connect the supplied power cable to the device first. Then connect the power cable to the power outlet.
- The device should only be connected to an AC power supply.  
It must not be connected to DC supply, under any circumstances as there is a risk of electric shock.
- When powered on, the device will be turned on directly or standby.

※ Note: For some models, switch the device on by pressing the power button.

If the power indicator lights up red, the device is in standby mode.

Press the button on the remote control or the “on” button on the device to turn on.

### Switching off

- To put the device into standby mode, press the  $\odot$  button on the remote control or on the device, the device remains powered on, but with low energy consumption.
- To switch off the device, unplug the mains socket from the mains outlet.

※ Note: For some models, press the power button to switch off the device.

### Troubleshooting

Most problems you encounter with your device can be corrected by consulting the following troubleshooting list.

#### **No picture, no sound**

- Check if the fuse or circuit breaker is working.
- Plug another electrical device into the outlet to make sure it is working or turned on.
- Power plug is in a bad contact with the outlet.
- Check the signal source.

#### **No color**

- Change the color system.
- Adjust the saturation.

#### **Remote control does not work**

- Change the batteries.
- Batteries are not installed correctly.
- Main power is not connected.

#### **No picture, normal sound**

- Adjust the brightness and contrast.

#### **Normal picture, no sound**

- Press the **Vol+** button to increase volume.
- Volume is set to mute, press the mute button to restore sound.
- Change the sound system.

#### **If the device is crashed**

- Press the Power button to turn off device; then press the Power button again to reset the device.
- Unplug the power cord, then press the Power button to reset the device.

※ Note: *If these 2 methods can not be resolved, please contact the after-sales to solve.*